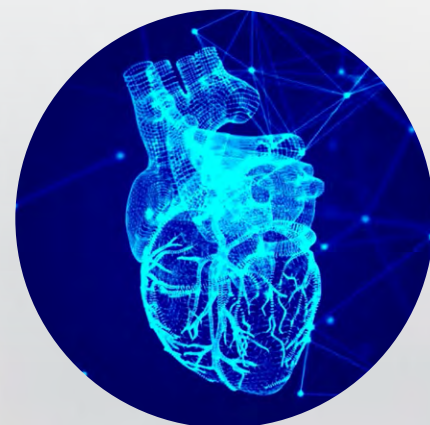


FIVE REASONS TO SWITCH TO CARDIAC PET/CT



Cardiac PET imaging represents a significant advancement in cardiovascular diagnostics, offering numerous clinical and operational benefits over traditional methods like SPECT imaging.

Recent findings have highlighted the transformative potential of Cardiac PET, its real-world applications, and practical solutions for its adoption in clinical practice.



1.

SUPERIOR DIAGNOSTIC ACCURACY

Cardiac PET/CT stands out for its exceptional diagnostic accuracy!

Compared to treadmill and SPECT imaging, Cardiac PET achieves unparalleled precision in detecting coronary artery disease (CAD) and other cardiac conditions with precise quantitative measurements of myocardial blood flow, which are instrumental in confirming diagnoses and informing treatment strategies. This high level of accuracy reduces the likelihood of false positives or negatives, ensuring that patients receive the correct diagnosis and appropriate treatment.



2.

SAFETY AND EFFICIENCY

One of the primary advantages of Cardiac PET is its safety. The technology involves lower radiation exposure² than traditional methods like SPECT.

Additionally, Cardiac PET offers quick image acquisition, taking only five minutes, allowing the entire study to be completed within 30 minutes³. This efficiency benefits both patients and healthcare providers, reducing time spent in the clinic and enhancing overall patient experience.



3.

ENHANCED PATIENT CONVENIENCE

Traditional cardiac stress tests can be uncomfortable and time-consuming for patients. In contrast, Cardiac PET/CT is a faster, non-invasive procedure that typically takes less than an hour from start to finish³



The comfort and accuracy of PET imaging are enhanced by high-quality, high-resolution images that are attenuation-corrected, eliminating the need to account for situations that can compromise diagnostic integrity¹. This patient-centric approach ensures that patients have a more pleasant experience without compromising the accuracy of their diagnosis.

4.

IMPROVED PROGNOSTIC CAPABILITIES

Cardiac PET/CT not only diagnoses existing heart conditions, but also offers valuable prognostic information.

The ability to provide quantitative myocardial blood flow measurements adds significant value¹ to visual interpretations by offering precise data. This capability is crucial for identifying multi-vessel coronary artery disease and monitoring responses to lifestyle changes, risk factor modifications, and therapeutic interventions. This detailed information helps predict the likelihood of future cardiac events, allowing clinicians to develop more effective, personalized treatment plans that can prevent severe complications down the line.



5.

ENHANCED CLINICAL DECISION-MAKING

Cardiac PET allows for the accurate assessment of coronary flow reserve², providing essential physiological information that complements anatomical data from catheterization.

This comprehensive view aids in making informed decisions about revascularization and other treatments, improving patient care. The ability to assess absolute blood flow and coronary flow reserve with Cardiac PET imaging is vital in accurately determining disease severity and optimizing therapeutic approaches for patients¹.



Cardiac PET/CT: Unmatched Accuracy, Safety, and Value

Cardiac PET/CT represents a significant advancement in cardiac care, offering superior diagnostic accuracy [1], safety, efficiency, and enhanced patient comfort. Its ability to improve prognostic capabilities, integrate seamlessly with modern treatment planning, and provide long-term cost savings makes it a compelling choice for both healthcare providers and patients. As technology continues to evolve, making the switch to Cardiac PET/CT could be a game-changer in the way cardiac conditions are diagnosed and treated.

CDL Nuclear Technologies' Comprehensive Cardiac PET/CT Solutions

Understanding the critical need for efficiency and cost-effectiveness in cardiac diagnostics, CDL Nuclear Technologies offers three state-of-the-art solutions tailored to meet unique clinical needs: on-demand, mobile Rubidium-82 services, fully equipped Mobile Cardiac PET/CT Trailers, and comprehensive integration of Cardiac PET/CT suites. From the initial assessment to ongoing operational support, CDL Nuclear Technologies is committed to providing the solutions you need to enhance patient outcomes and optimize your care. Learn more about how CDL Nuclear Technologies can help bring Cardiac PET/CT to your practice.

[Learn More about Our Solutions
for Adopting Cardiac PET/CT](#)

¹ Bateman™ et al. J Nucl Cardiol. 2016;23: 1227-1231

² Bateman™ et al. J Nucl Cardiol. 2006;13: 24-33

³ Bateman™. J Nucl Cardiol. 2012;19: 3-11

